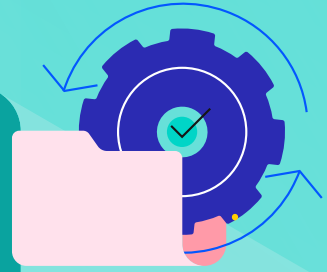


MOVEit Automation Implementation Services

OVERVIEW



Our commitment to you extends beyond the initial purchase of our products. Following your purchase, our team of Progress Professional Services Technical Consultants is dedicated to ensuring a prompt, efficient, and successful deployment of our software.

Our MOVEit Automation Implementation Service is structured to offer the flexibility required for a customized implementation and configuration. A designated Technical Consultant will manage core implementation tasks and provide up to 3 hours of installation and post-implementation assistance.

Core Implementation Service

The Implementation Services empower your system administrators or support personnel to collaborate with our Technical Consultants to achieve the following objectives:

Project Planning

Discuss implementation strategy

- Verify prerequisites
- Schedule activities
- Implementation

Install the MOVEit Automation software

- Review backup procedures
- Post-Implementation Service

Post-Implementation Service

Upon the completion of core Implementation Service activities, customers have the option to utilize the remaining time for selected services from the following list:

Post-Implementation

Post-Implementation Service Activities	Recommended for high availability
<ul style="list-style-type: none">• Disaster Recovery Installation/Setup• Product Consulting• AS2 Configuration• Workflow Setup• Configure Service to operate as a Domain User• Define Database/Log retention settings• High availability Implementation Service (up to 5 hours of service)	<ul style="list-style-type: none">• Preliminary planning sessions• Installation and foundational configuration of the Active/Passive Nodes• Review of patching procedures• Customization post-implementation (subject to available time)



Contact Us Today!

www.progress.com/moveit/contact-sales

About Progress

Progress (Nasdaq: PRGS) provides software that enables organizations to develop and deploy their mission-critical applications and experiences, as well as effectively manage their data platforms, cloud and IT infrastructure. As an experienced, trusted provider, we make the lives of technology professionals easier. Over 4 million developers and technologists at hundreds of thousands of enterprises depend on Progress. Learn more at www.progress.com

/progresssw
 /progresssw
 /progresssw
 /progress-software