

Personal Data GDPR Dashboard

QUICKSTART GUIDE

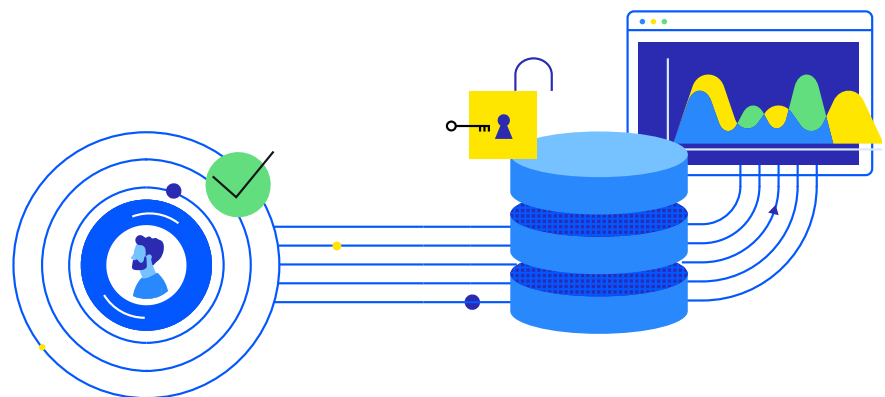
The EU General Data Protection Regulation (GDPR) went into effect in May 2018. Any organisation in possession of EU citizens' personal data is subject to compliance.

The MarkLogic Consulting team at Progress has developed a service specifically designed to support your GDPR compliance. We use the operational and transactional Progress® MarkLogic® database to build your Personal Data GDPR Dashboard.

GDPR Quick Start

The GDPR Quick Start service helps you with one of the most difficult aspects of this regulation – a 360 degree view of what personal data you hold for each data subject – in a Personal Data GDPR Dashboard.

This gives your organisation the ability to see a comprehensive view of each data subject without having to complete a time consuming and expensive MDM project. The dashboard harnesses the power of the schema-agnostic, multi-model MarkLogic database to enable the analysis of data from almost any source system—including legacy technologies that are too difficult to change at source. A single harmonised view of personally identifying information (P2I) data held on each data subject and its provenance (which source system and source record). Evidence of any consent that has been recorded.





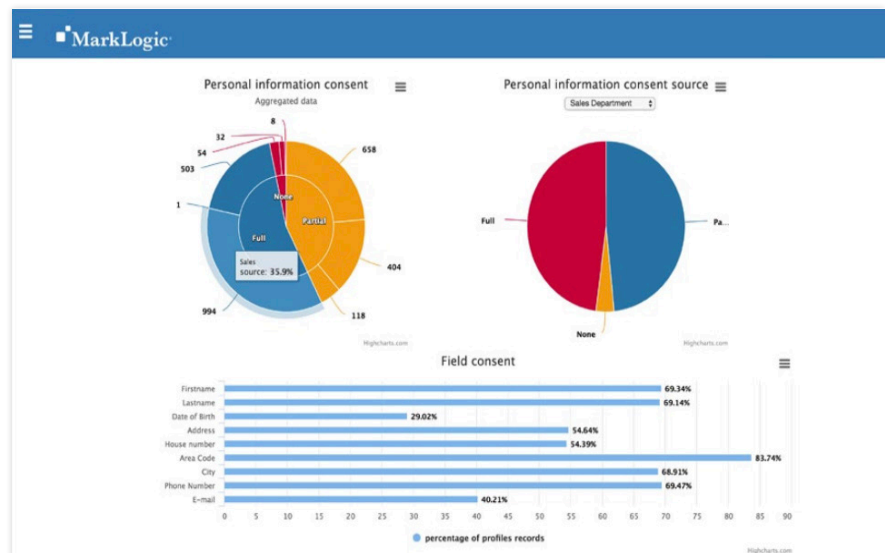
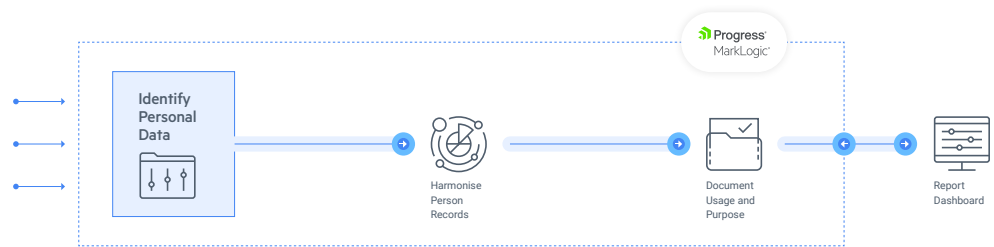
The business benefits include:

- Ability to communicate a data breach to affected data subjects within the mandated timeframe
- Ability to respond to data subject access request (DSAR) requests comprehensively and with minimum manual effort
- A single view of the customer that can be used for purposes in addition to GDPR compliance



The GDPR Quick Start service provides:

- A low-risk, low-cost service offering that demonstrates the value of a MarkLogic GDPR Dashboard
- Gets you up and running with harmonised data subject views from up to 3 source systems within a month





The GDPR Dashboard is extensible:

- Allows additional data source systems to be included easily and quickly
- Incorporate all of the different data sources in your organisation, including legacy mainframe databases, file stores and even hard copy documents

The goal of the Quick Start is to demonstrate how quickly your organisation is capable of getting onto the GDPR compliance journey. The application can be expanded to include all your systems and take advantage of the MarkLogic database proprietary functionality to manage consent over time.



Success is Simple

We have solved multiple regulatory compliance use cases and can help accelerate your compliance journey. You won't need a big resource commitment for the GDPR Quick Start. But to help get you started quickly, we recommend the following preparation:

Identify your three source systems for the Quick Start. Select those that are likely to have enough rich information on individuals to facilitate the entity matching and linking. CRM, human resources, campaign management, and e-commerce systems are excellent candidates.

Allow access to sample data. We don't need a full data model, but we do need data from upstream systems so that we can start building the transforms for these inside MarkLogic.

Assemble a strong integrated team. You need people that know and run your business to be part of your core team, so that information and validation are available at the point of need.



How We Work

If you ensure that the above are in place when you start your engagement with the MarkLogic Consulting team over the course of the 30 days of your GDPR Quick Start project we would expect to:

- Quickly review your sample data sources to ensure that your nominee systems are suitable for the project

- Define and implement processes and communication structures to ensure that we can work with your product owner and subject matter experts most efficiently
- Document a plan for ingesting data from your source data systems
- Develop transforms in MarkLogic to enable Data Subject matching and linking
- Deliver the GDPR application dashboard and Data Subject reports
- Document a transition plan for extending the application to additional source systems and for production hardening

Why MarkLogic Consulting



A Sound Foundation for Your Regulatory Compliance Strategy

Choosing the MarkLogic GDPR Quick Start service will provide your organisation with tangible privacy assessment results and an impartial personal data audit – a critical element in your GDPR compliance strategy.



Powered by Our Multi-model Database

Solving regulatory data challenges requires a database that empowers you to integrate all of your data with minimal disruption to your business. The MarkLogic multi-model database does just that and also provides powerful, “ask anything” search, semantic capabilities, and bi-temporal stamping for querying data.

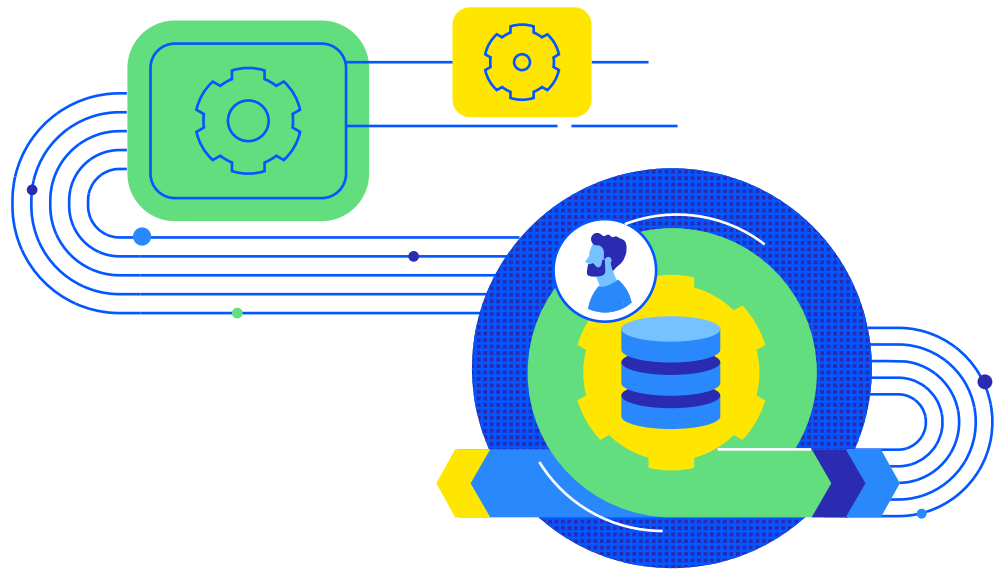
With support for secure operations, accurate reporting and analysis over the full lifecycle of data, the agile MarkLogic platform makes it easier to adapt to changes in regulations – and support the implementation of your GDPR compliance initiative.



Supported by a Team of Dedicated Consultants

The MarkLogic Consulting Services team are experts with vast experience of solving data integration challenges with large data volumes, variety, velocity, and complexity. They work on the world's most complex data integration projects and they leverage an agile Delivery Methodology that encourages stakeholder feedback and accelerates skill acquisition among team members to ensure your project's success.

Consulting Services is constantly evolving its methodology to capture best practices and lessons learned. This dedication to perfection enables powerful, agile, and trusted applications delivered to market faster and more efficiently.



Contact us to request the GDPR Quick Start service

About Progress

Progress (Nasdaq: PRGS) provides software that enables organizations to develop and deploy their mission-critical applications and experiences, as well as effectively manage their data platforms, cloud and IT infrastructure. As an experienced, trusted provider, we make the lives of technology professionals easier. Over 4 million developers and technologists at hundreds of thousands of enterprises depend on Progress. Learn more at www.progress.com

© 2024 Progress Software Corporation and/or its subsidiaries or affiliates.
All rights reserved. Rev 2024/01 | 1205234491664008

f /progresssw
x /progresssw
y /progresssw
in /progress-software
o /progress_sw_