

Healthcare Payer Systems Modernization

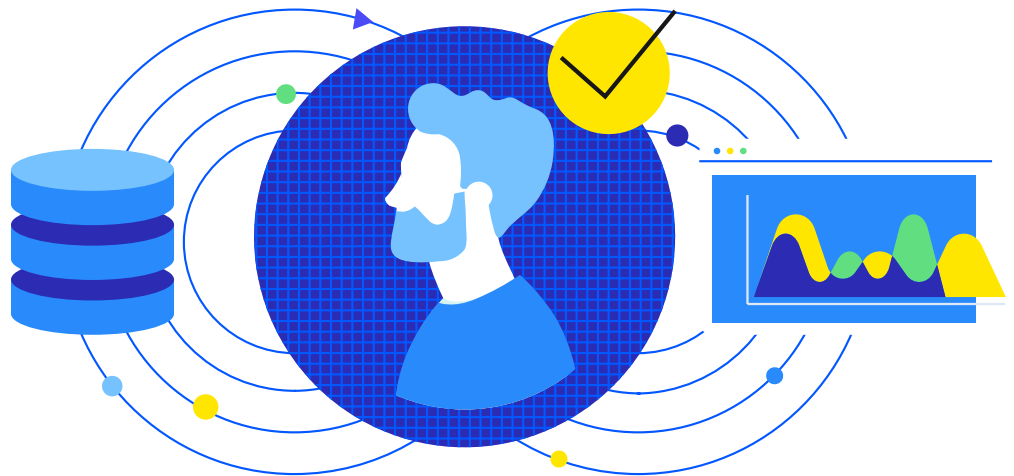
Operational Data Hub and MPI for Payer
Digital Transformation

To improve the delivery of healthcare services and meet requirements for health data interoperability, technology leaders of payer systems need to modernize their aging relational databases. The Progress® MarkLogic® Data Hub for Payer combines a data hub with a Master Patient/Provider Index (MPI) that allows them to confidently accelerate migration of legacy data to a more modern platform that simplifies data integration while future-proofing IT architecture.

Modernization Challenges

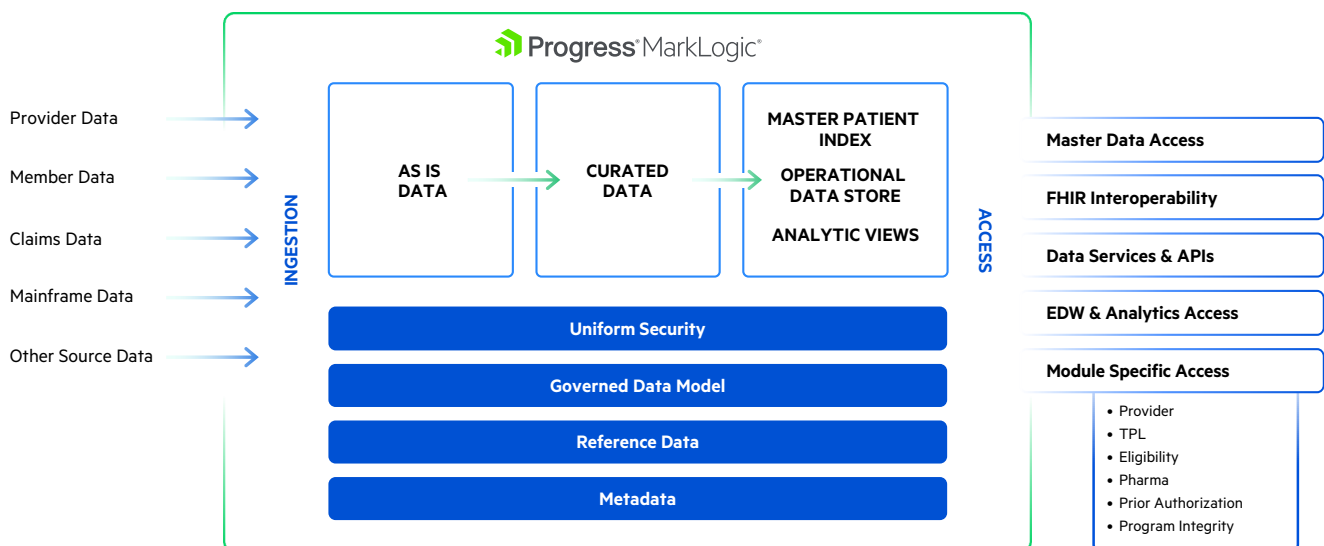
Payer projects are typically custom solutions and monumental undertakings that traditionally suffer from lengthy waterfall-based development cycles – resulting in costly systems integration and deployment delays.

Legacy systems and separate Master Data Management (MDM/MPI) technology are simply not up to the task of quickly and reliably delivering a complete, real-time, person-centric 360° view from disparate data silos. To get to a true golden record of your members and providers – and ensure the data security you need – you need a new approach for integrating data from legacy and newer systems to modern agile domain-specific modules. The MarkLogic platform further simplifies modernization by handling much of the EDW load directly from the data hub.



Why MarkLogic Data Hub for Payers?

Simplification. Agility. Speed. Cost. By combining many components, the MarkLogic Data Hub reduces risk, complexity, time-to-value, and TCO. It provides an enterprise-ready solution for payers with MPI and EDW capabilities, plus built-in master data indices, search, security, and analytics. The hub integrates data from any legacy system or new module with ease, and reduces the risks and costs of payer system modernizations. As a proven data hub approach, we ensure that payers create solutions that are HIPAA, HITRUST, and FHIR-compliant, accommodate change, and position our customers for success in the out years.



Having all member, provider, plans, claims, pharmacy, and other program data in one place with easy and secure accessibility is also a first step towards improved operational execution and better service delivery, such as care coordination and population health management. Also, the consolidation of data reduces development times and simplifies operations – thereby reducing the total cost of ownership (TCO).

Benefits of Modernizing with MarkLogic



- **Accelerate development and modernization:** A MarkLogic data hub can be deployed before individual data-domains are implemented, allowing a payer to get started on data modeling, sharing and governance immediately. And with intuitive tooling, data owners are less reliant on software engineering for all data integration tasks.



- **Streamline your architecture:** Using the MarkLogic Data Hub for Payers, your organization now has an enterpriseready data hub with comprehensive capabilities that can eliminate or reduce the need for multiple database/storage systems, such as enterprise data warehouses and lakes. This simplified architecture for data integration is HIPAA compliant and consistent with HITRUST guidelines.



- **Share data safely:** Upfront, built-in, certified security – including support for LDAP, secure de-identification and redaction – enables data sharing instead of inhibiting it.



- **Enable unified 360° views needed for service development:** By curating, deduplicating and linking all data, systems can access a complete view of members, providers, hospitals and any other important entity. These unified views are critical for efficient payer processing, and also supports integrated case management and population health.



- **Directly provide reporting and analytics:** Analytic outputs and reports can be served directly from “data lenses” within the MarkLogic platform, which provide customized analytic views. This direct reporting and analytic capability can reduce or eliminate the need for custom analytic components such as a full-scale EDW.



- **Future-proof your payer systems:** Schema flexibility and data agility ensures that your organization can integrate data from any legacy system or new modules with ease, and adapt to future changes.

Proven Payer Systems Success

Payers have successfully transformed their commercial, Medicare, and Medicaid services with MarkLogic. These payers have used the MarkLogic platform to implement a variety of solutions that help their business get more value from their complex data, faster.

- Member communications 360 – a complete view of all member communications with the company.
- Member 360 – a complete view of all data for each given member.
- Complete healthcare insurance products – a complete view of all data needed including members, plan, subscriptions, benefits, patient preferences, claims, pharmacy benefits and so on.



Need a trusted partner and robust tools for your digital transformation? Contact Us!

About Progress

Dedicated to propelling business forward in a technology-driven world, [Progress](#) (NASDAQ: PRGS) helps businesses drive faster cycles of innovation, fuel momentum and accelerate their path to success. As the trusted provider of the best products to develop, deploy and manage high-impact applications, Progress enables customers to build the applications and experiences they need, deploy where and how they want and manage it all safely and securely. Hundreds of thousands of enterprises, including 1,700 software companies and 3.5 million developers, depend on Progress to achieve their goals—with confidence. Learn more at www.progress.com

2023 Progress Software Corporation and/or its subsidiaries or affiliates. All rights reserved.
Rev 2023/10 1205783458445630

Worldwide Headquarters

Progress Software Corporation
15 Wayside Rd, Suite 400, Burlington, MA01803, USA
Tel: +1-800-477-6473

- facebook.com/progresssw
- twitter.com/progresssw
- youtube.com/progresssw
- linkedin.com/company/progress-software
- [progress_sw_](https://instagram.com/progress_sw_)