

# 5 Things to Know Before Migrating to PAS for OpenEdge

DATA SHEET

Migrating to [Progress Application Server for OpenEdge \(PAS for OpenEdge\)](#) is a crucial step for modernizing your Progress OpenEdge applications. Get to know the key aspects that can impact your migration process—before you make the move.

The following five points highlight areas to review and address to facilitate a smooth and successful transition to PAS for OpenEdge.

## Need Help?

[Log a support ticket](#) or check the [PAS for OpenEdge community forum](#).

## 01 PAS for OpenEdge is not your Classic AppServer

Learn the differences between the Classic AppServer and PAS for OpenEdge. They both do the same work, supporting OpenEdge ABL requests, but they do it in very different ways. Learn more in our documentation:

- [Comparing PAS for OpenEdge to Classic AppServer](#)
- [Overview of WebSpeed Support in PAS for OpenEdge](#)

## 02 Application memory leaks are a big problem

Before moving to PAS for OpenEdge in production, look for application leaks. The best way to do this is to set up PAS for OpenEdge in a test environment and run one of the many tools to help find application leaks. Be sure to learn how to “safely” terminate a multi-session agent if memory gets too big.

Check out these resources:

- [Setting, Getting, Unsetting ABL Object Tracking](#)
- [Stopping a Multi-Session Agent](#)
- [Adding a Multi-Session Agent](#)
- [How to Detect ABL Memory Leaks with Dynamic Objects Logging](#)
- [Identifying and Troubleshooting Memory Leaks](#)

## 03 Don't use PAS for OpenEdge for a batch server

If you used the Classic AppServer as a batch job server, this may cause performance issues when running in PAS for OpenEdge. There are ways to mitigate the performance drain, like running a different PAS for OpenEdge instance just for batch processing or running batch processes from a scheduler.

Neither the Classic AppServer nor PAS for OpenEdge was designed to be a batch processor. With Classic AppServer, this may not be an issue, but the multi-session agent running many batch jobs at once can cause O/S processing contentions, especially if there are many long-running batch jobs at the same time.

## 04 Certain calls to the Operating System may cause performance problems

Calls to the operating system can have poor performance. You should check your application code for the following ABL functions. Depending on how they are used, they may cause performance issues. See [this Community post](#) for more information.

- OS-COMMAND
- INPUT-THROUGH
- DOS
- UNIX

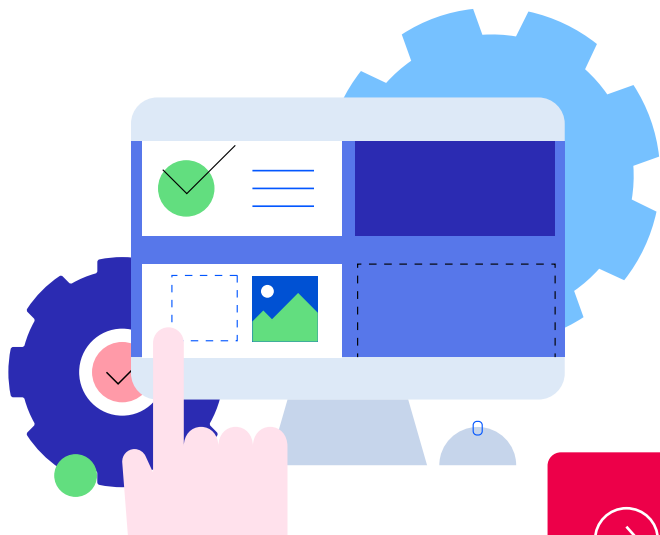
## 05 Third-party library integrations may not be multi-threaded

If your code is calling out to third-party libraries make sure they are thread-safe or configure PAS for OpenEdge to accommodate them.

For more information on using Third-party Libraries, review [this knowledge base](#).

Approach your migration with these five things in mind to achieve a smooth transition. Leveraging available resources, such as support tickets and community forums, can provide additional guidance and support throughout the migration process.

By taking these steps, you can harness the benefits of PAS for OpenEdge and enhance the performance, security and reliability of your OpenEdge applications.



[Learn more about migrating to OpenEdge 12](#)

### About Progress

Progress (Nasdaq: PRGS) empowers organizations to achieve transformational success in the face of disruptive change. Our software enables our customers to develop, deploy and manage responsible AI-powered applications and digital experiences with agility and ease. Customers get a trusted provider in Progress, with the products, expertise and vision they need to succeed. Over 4 million developers and technologists at hundreds of thousands of enterprises depend on Progress. Learn more at [www.progress.com](http://www.progress.com)

© 2025 Progress Software Corporation and/or its subsidiaries or affiliates.  
All rights reserved. Rev 2025/02 | RITM0280112

### Worldwide Headquarters

Progress Software Corporation  
15 Wayside Rd, Suite 400, Burlington, MA 01803, USA  
Tel: +1-800-477-6473

[facebook.com/progresssw](https://facebook.com/progresssw)  
[twitter.com/progresssw](https://twitter.com/progresssw)  
[youtube.com/progresssw](https://youtube.com/progresssw)  
[/progress-software](https://linkedin.com/company/progress-software)  
[progress\\_sw\\_](https://instagram.com/progress_sw_)