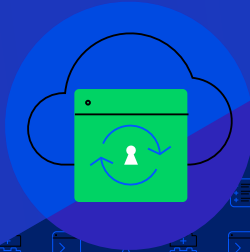


Migration from Classic Application Server (CAS) to Progress Application Server (PAS) for OpenEdge



FREQUENTLY ASKED QUESTIONS (FAQ)

This document addresses the most commonly asked questions from the Progress Community regarding the adoption of the PAS for OpenEdge®.

1. What application server technology exists for Progress® OpenEdge?

Progress offers two application server implementations for OpenEdge:

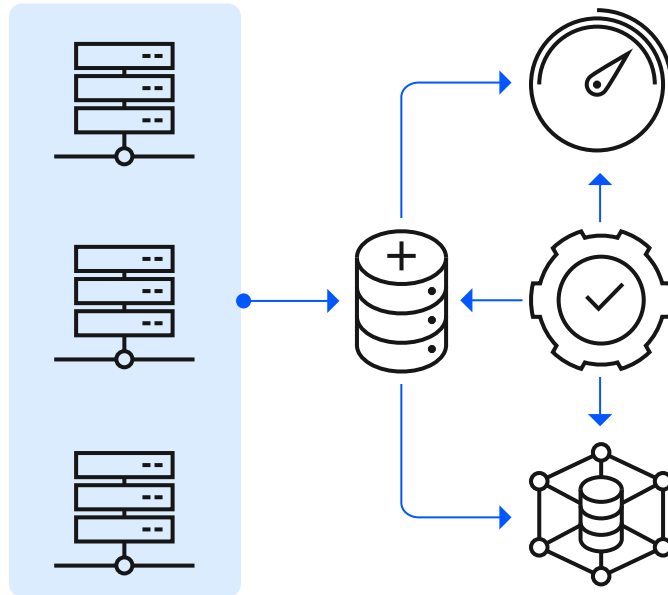
- Progress OpenEdge Application Server – First launched at the end of 1996, it is frequently referred to as ClassicApp Server (CAS) and must be configured with a web server to support WebSpeed, AIA, REST and mobile applications. The last version of OpenEdge to support it is 11.7.x.
- Progress Application Server (PAS) for OpenEdge – Available since late 2015, it is based on current and open technologies including Apache Tomcat, and it is the sole Application Server recommended by Progress for OpenEdge 12.x applications and later.

2. Why was PAS for OpenEdge introduced?

Occasionally, disruptive market forces require rethinking key features or functionality, and replacement is sometimes necessary to ensure future evolution and success. Each release of OpenEdge adds new features and functionality that support customers and partners in their efforts to continually drive business value from their applications.

PAS for OpenEdge was introduced as a new product alternative to address a changing technology landscape, one where DevOps and cloud scale are imperatives. CAS, originally built on technology available in the late 1990's, had architecturally reached the end of its

technological benefit. To help customers and partners address changing demands, we created a new application server for OpenEdge built from the ground up with features and capabilities that could not have been implemented in CAS. It is not an upgrade of existing technology, but a replacement for technology that had become a barrier to future application evolution.



3. What does PAS for OpenEdge provide to customers that cannot be achieved with CAS?

OpenEdge 12.0 was released in March of 2019 and provides significant value to customers and partners by improving their scalability, bolstering database availability and significantly boosting database performance. The significant advances in OpenEdge 12.0 cannot be fully realized with CAS.

Today's businesses are looking to migrate their applications to the cloud for the elasticity, scalability and cost efficiencies it provides. The cloud-ready, secure, standards-based architecture of PAS for OpenEdge is more efficient and scalable for customers and partners. As customers and partners upgrade to the OpenEdge 12 series and move to take advantage of its benefits, they will be required to upgrade their application server to PAS for OpenEdge.

4. Is the Classic App Server still available?

CAS is no longer available with the release of OpenEdge 12.0. If you are currently on OpenEdge 11.7 or earlier, you can continue to use CAS and it is fully supported and maintained with OpenEdge in accordance with the [Progress OpenEdge Life Cycle Policy Guide](#).

There are significant business benefits of making the move, but you are not under pressure to do so. If you are not ready to migrate to PAS for OpenEdge at this time, we recommend that you move up to OpenEdge 11.7 if you haven't already, which will not be retired until April 2024. When you are ready, you can make the move to PAS for OpenEdge on either OpenEdge 11.7 or the most current version.

5. Was there an official announcement discontinuing CAS with the release of OpenEdge 12?

An announcement was sent in January 2019 discontinuing the availability of CAS with the release of OpenEdge 12.0 in March 2019. If this communication was missed, it was also documented in the Deprecated Features section of the [Platform and Product Availability Guide \(PAG\)](#) when OpenEdge 12.0 shipped.

6. Is it a requirement to move to PAS for OpenEdge, if migrating to OpenEdge 12?

Yes, with the launch of the OpenEdge 12.0 in 2019, CAS was deprecated from the latest releases of OpenEdge. Its replacement, PAS for OpenEdge, provides significant value by improving your ability to scale and achieve continuous availability. In order to achieve these benefits and scale when moving to a cloud environment, you must move to a version within the OpenEdge 12 series. You may want to begin planning your migration to PAS for OpenEdge. There are two migration approaches, incremental or direct. Which approach you use depends on your application complexity and system resources. It is important to become familiar with the migration steps and differences between your current and target architectures before beginning your migration. You can find details on migration at our [PAS for OpenEdge Resource center](#).

7. I have CAS under maintenance and would expect to upgrade to PAS for OpenEdge without any cost. However, you want to charge for it. Why?

PAS for OpenEdge is not a new version; it is a new product that is a web-server based on Apache Tomcat technology and architected for OpenEdge. CAS and PAS for OpenEdge are entirely different; with PAS being more scalable, performant and secure to support the latest versioning of OpenEdge. Those under an active maintenance contract have the ability to apply the trade-in value of CAS to PAS for OpenEdge and this does contribute significantly towards your modernization efforts.

You can remain on OpenEdge 11 and use CAS, it is not mandatory to move. However, it is a requirement if moving to OpenEdge 12.x. Migrating to PAS for OpenEdge is the first necessary step in achieving a modern, evolved application architecture that will continue to add value to the organization as user demands and business demands shift and change.

Additionally, PAS for OpenEdge is cloud-ready and the only application server technology that the OpenEdge team will enhance and improve upon going forward.

Engage with your [Progress Account Manager](#) to discuss the value of upgrading to OpenEdge 12.

Think about that. What other software company lets you purchase licenses, use them for years, and then trade in the entire purchase value towards newer products?

8. How would adopting PAS for OpenEdge benefit my business?

- **Modern** – PAS for OpenEdge is built upon the industry-standard Apache Tomcat web server framework, installed, configured and monitored as a web server that supports modern internet applications.
- **Secure** – PAS for OpenEdge comes with the Spring Security Framework included, our innovative application server was designed on the latest standards for secure operation. This sophisticated technology is the foundation for the OpenEdge Authentication Gateway, ensuring trusted identity management by hardening the overall security of your OpenEdge application environment.
- **Cloud-Ready** - PAS for OpenEdge provides a scalable and cloud-ready server to optimize operations and reduce management costs. This modern application development platform unifies all of the Progress products into a single application server technology, providing customers a familiar programming model, increased communications, simple/consistent installations and easier management.
- **Supports ABL Development and Deployment** – PAS for OpenEdge is specifically tailored to support ABL application development and deployment environments. Designed to use significantly fewer system resources than the original OpenEdge AppServer, PAS for OpenEdge delivers high scalability and performance for your business applications.

Note: If you are moving to the OpenEdge 12.2 release, PAS for OpenEdge is required.

9. Have customers have successfully moved from CAS to PASOE?

Numerous customers and partners from around the world have successfully moved from CAS to PASOE. You can [find their stories on our website](#) and discover how modernizing their business applications enabled them to overcome the challenges they faced and position their business for success for years to come.

10. Is there any documentation available that provides further details?

We have a host of resources available that can help you learn more about migrating CAS to PAS for OpenEdge on the Progress Information Hub. The materials include:

- [Quick Start tutorial](#) for migrating CAS applications and REST services to PAS for OpenEdge
- New [Starter Files](#) for running the quick start tutorial, hosted on the OpenEdge General Community
- Overviews detailing the migration process:
 - [Migrate Classic AppServer Applications to PAS for OpenEdge](#)
 - [Migrate Classic AppServer REST Services to PAS for OpenEdge](#)
- Updated migration reference (Classic AppServer and WebSpeed) and architectural information about PAS for OpenEdge:
 - [Learn About Migrating Classic AppServer Applications to PAS for OpenEdge](#)



Learn More About the OpenEdge 12 Series

Engage with your [Progress Account Manager](#) to discuss the best plan for your organization to upgrade to the OpenEdge 12.2 release.

To meet demand for application performance, high availability, security and data management, OpenEdge 12 is continuously evolving with new features and enhancements. Read our [database performance whitepaper](#) for more insight into how some of these features directly improve your OpenEdge-based applications.



Learn more
The Latest Version of OpenEdge

About Progress

Progress (NASDAQ: PRGS) provides the leading products to develop, deploy and manage high-impact business applications. Our comprehensive product stack is designed to make technology teams more productive and enable organizations to accelerate the creation and delivery of strategic business applications, automate the process by which apps are configured, deployed and scaled, and make critical data and content more accessible and secure—leading to competitive differentiation and business success. Learn about Progress at www.progress.com or +1-800-477-6473.

© 2021 Progress Software Corporation and/or its subsidiaries or affiliates. All rights reserved.
Rev 2021/06 RITM0076589 RITM0118256

[f](#) /progresssw
[t](#) /progresssw
[v](#) /progresssw
[in](#) /progress-software