

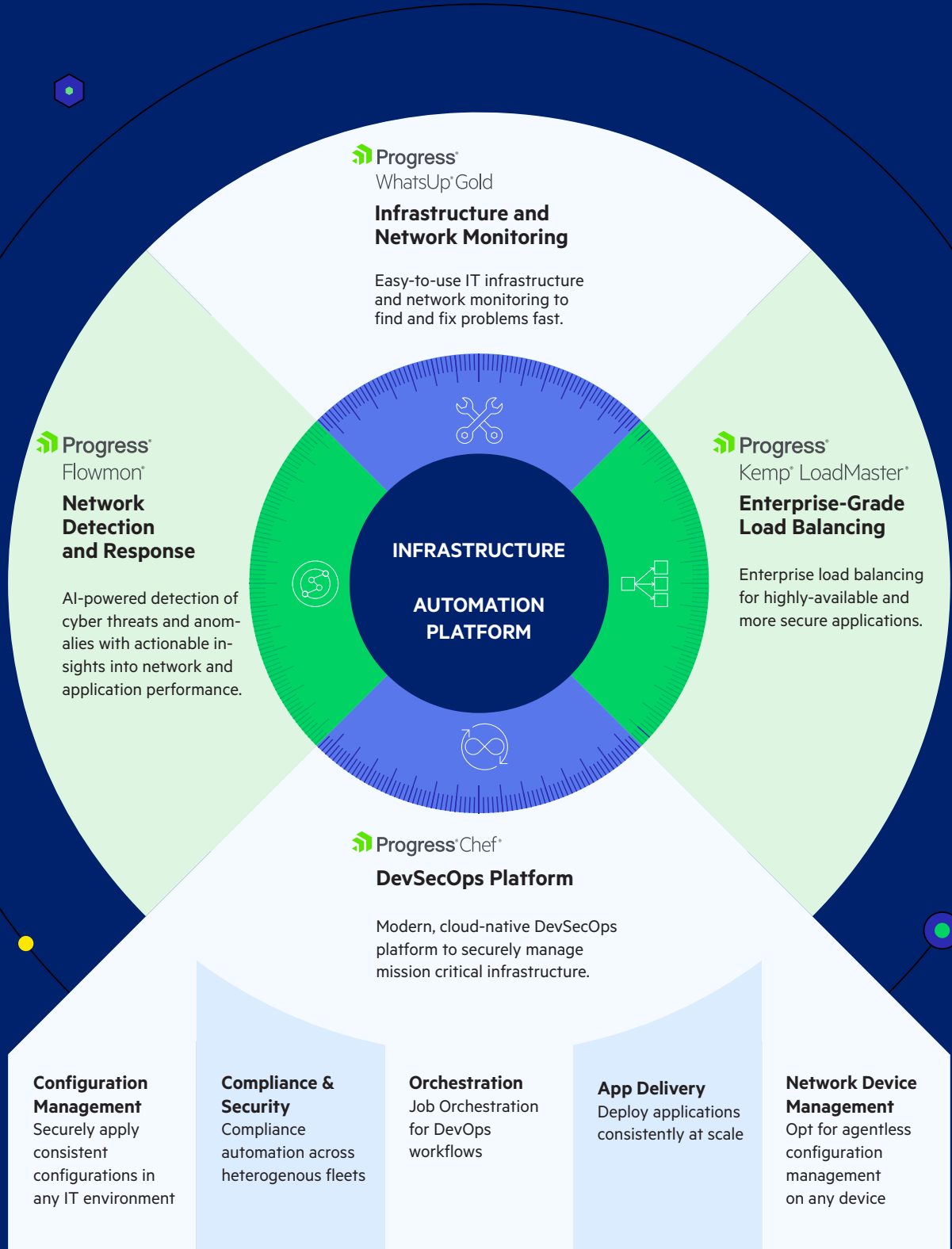
Progress Infrastructure Management

360° Solutions for Your
Infrastructure Needs

BROCHURE



Progress helps businesses establish resilient cloud and IT infrastructure in preparation for the challenges of the current IT landscape. Our solutions help customers manage their infrastructure for mission-critical applications in a secure and scalable manner. From infrastructure and network monitoring to configuration and compliance management to application delivery control, our solutions provide a 360-degree view of your IT fleet.



Simplify the Management of Your Complex IT Infrastructure

Complete visibility into the status and performance of applications, network devices and servers in the cloud or on-premises

Progress® WhatsUp® Gold facilitates efficient IT infrastructure problem resolutions through a powerful combination of out-of-the-box functionality, intuitive workflows, visual displays, dashboards and system integrations. WhatsUp Gold monitors everything connected to the IT infrastructure and displays it in one interactive and intuitive mapping interface.

Administrators can deploy WhatsUp Gold to help monitor, measure and resolve infrastructure issues and track application performance and network traffic. Sophisticated alerting and reporting capabilities simplify how you diagnose faults so you can resolve problems quickly.

WhatsUp Gold 360 is a SaaS offering for organizations of all sizes that provides the controls and insights necessary to analyze and extend their monitoring environment to the cloud. WhatsUp Gold also offers a network traffic monitoring solution, NTA+, which reduces troubleshooting times and easily determines the root-cause analysis of application performance issues like network errors, outages, configuration issues and performance degradation. With real-time analysis, and raw historical data and trends, you can determine if the network, connections or applications are the problem.



“The solution provides our IT operations with a unified single view of the entire decentralized infrastructure across geographically distributed offices. It’s an essential tool for us to maintain smooth operations of the Land Registration Authority.”

Christopher A. Igay
Head of Security and IT Operations, LARES



Start fast with easy installation, online training, automated discovery and out-of-the-box functionality.



Use visual maps, dashboards, and reports to quickly monitor, measure, and resolve network errors, driving communication at all user levels.



Enhance productivity by automating discovery, mapping, monitoring, alerting and configuration, log and asset management.



Consolidate your monitoring tools into a single product with a unified dashboard, covering your complex, hybrid network environment.



Limit your tool cost through subscription pricing, device-based (not sensor-based) pricing, easy scalability and integrated add-ons.



→ whatsupgold.com

Deliver Highly Available, Highly Secure Applications

Load balance and secure essential applications and services across your hybrid cloud ecosystem

Progress® Kemp® LoadMaster® is a high-performance Application Delivery Controller (ADC) and load balancer that enhances availability, scalability, performance and security in the cloud, hybrid cloud and on-premises environments worldwide. LoadMaster enables multi-cloud applications and provides users with access in the event of an application server outage. With layered application security and access control, LoadMaster also helps protect your critical applications and their data from unwanted exposure.

The SaaS dashboard, Progress® LoadMaster® 360, provides organizations of all sizes with the visibility and insights necessary to maintain optimal application and load balancer performance. As a cloud service, LoadMaster 360 provides a unified, customizable view of application delivery performance, actionable insights into security states and certificate lifecycle management.



“We chose Kemp for price, quality and scalability. It allowed us to move a key business infrastructure from the public cloud back into our in-house private cloud with significant monthly savings. Instead of paying over \$2,000 a month, we now pay \$400. Plus, support and onboarding were excellent.”

Vik Sharma,
Head of Information Technology, Balmain



Elevate the user experience through resilient load balancing, transparent failover, offloaded security processing and content optimization.



Implement layered security to protect applications and authenticate users, including WAF, pre-authentication, SSO, SSL/TLS encryption, and more.



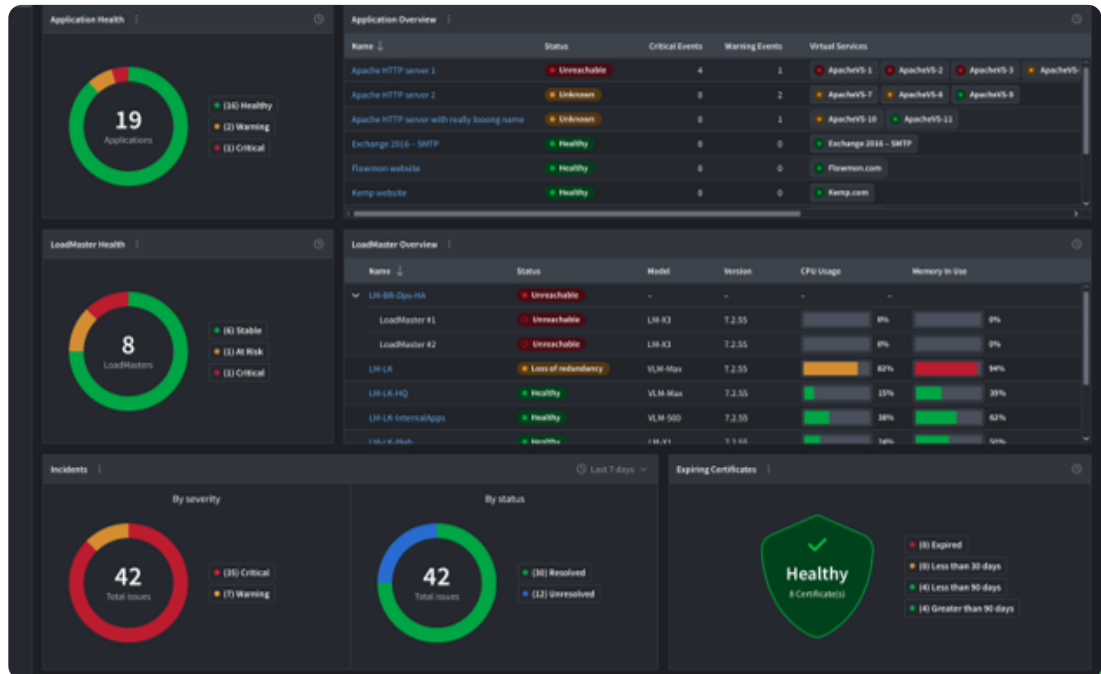
Access comprehensive dashboards and custom reports to monitor application performance, health and security.



Manage application issues with real-time notifications and context-rich critical alerts for a timely response.



Scale application resources with virtual, cloud-native, or hardware deployments, and simplified licensing options.



[→ kemptechnologies.com](https://kemptechnologies.com)

Prevent Breaches with AI-Driven Network Detection and Response

Improve overall security posture and track and analyze activity across your entire network.

Progress® Flowmon® is an AI-powered network security analyst joining your team, tirelessly monitoring your network 24/7, analyzing traffic patterns and identifying potential threats in real-time to help alert you in early attack stages. The solution distills thousands of alerts into a few security incidents and intelligently prioritizes critical events, providing real-time insights and actionable intelligence to shorten the time to investigate attacks and automate response.

Flowmon quickly detects ransomware, data breaches, botnets and many other threats, allowing you to investigate and mitigate them before they irreversibly impact your business. Autonomous response capabilities enhance containment, while forensic analysis enables you to collect, store and retrieve network security data for deep analysis. Troubleshooting and analysis significantly reduce the time to resolve the root cause of network and application performance degradation and outages.



Reduce breach impact and dwell time by monitoring network traffic with early compromise detection and proactive alerts.



Decrease mean time to resolution and root cause analysis time, saving hours or even days by extending visibility into network traffic.



Apply AI-powered detection and noise reduction to distinguish threats; and to respond quickly.



Boost tech staff efficiency with intuitive network monitoring tools enabling inexperienced team members to perform complex tasks.

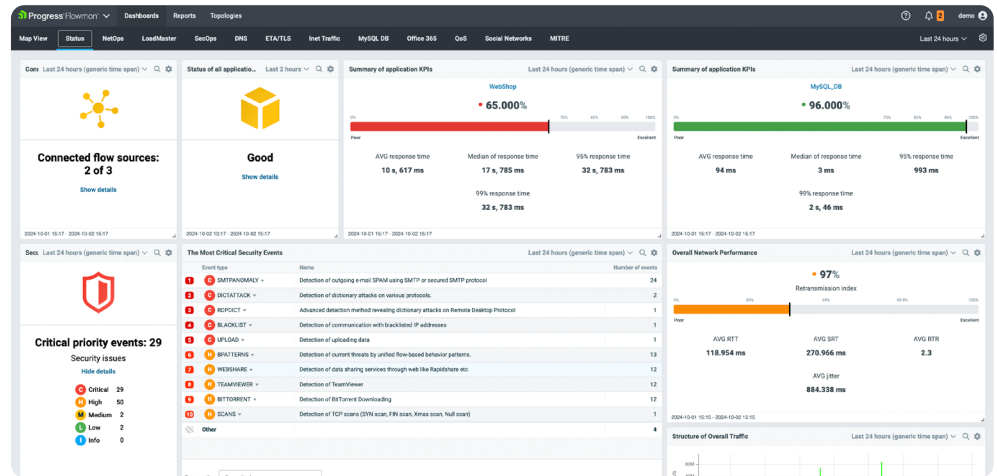


Use one tool and interface for availability, capacity, troubleshooting, compliance, and forensics in any environment.



“Thanks to the Flowmon solution, we have a clear overview and can act immediately. For example, we prioritize a specific network traffic, thereby we give priority to the business-critical network traffic from the hospital.”

Walter Telting,
ICT Architect, Haga Hospital



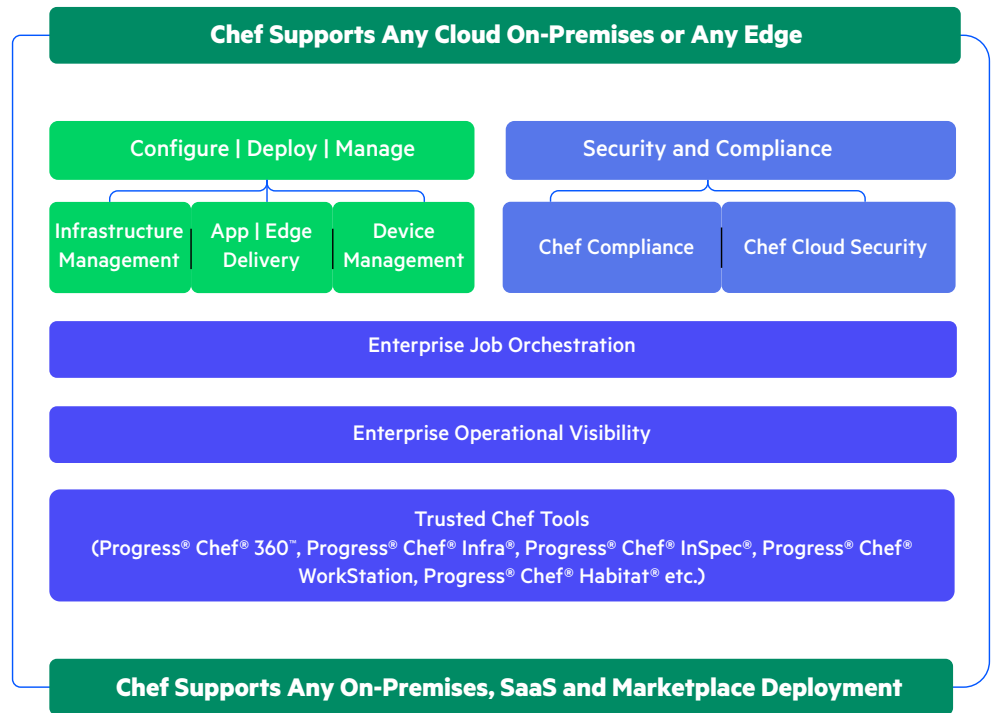
flowmon.com



Infrastructure Automation at Scale

Progress® Chef® 360™ is a DevSecOps automation solution that enables IT professionals to configure, deploy and manage infrastructure while maintaining continuous compliance and security across the fleet.

Chef improves your existing process by enabling job orchestration, network device management and application delivery (including to edge devices). As a result, you can empower your teams to collaborate, contribute and coordinate through a unified interface for fleetwide visibility and control—all on one platform.



→ chef.io

Scale Your Operations with Cloud-to-Edge Infrastructure Automation

Deploy applications, configure infrastructure and manage your fleet.

Built by developers for developers, Chef offers platform-agnostic flexibility that allows you to apply configurations across environments (cloud, VMs and on-premises), consistently, securely and at scale. On the one hand, you can leverage infrastructure as code for automated and testable configuration and system state management. On other, you can get a consolidated view of your IT fleet with real-time, easy-to-filter data and actionable insights.

Chef can also help you build, deploy and manage applications as code using lightweight, immutable, discrete and portable artifacts. With Chef, you can manage your edge devices extensively, including configuration, compliance and application delivery. You can handle dependencies, facilitate flexible and controlled deployments with easy rollbacks and deliver applications on time, every time.



Lighten workloads, minimize operational costs and become self-reliant by managing changing configurations in complex IT environments with automation.



Improve agility with faster application deployments (weeks to hours) and reduce time to market.



Gain customer trust and stakeholder confidence by swiftly resolving drifts and maintaining successful application deliveries.



Deliver applications and maintain configurations on any environment, any device, anywhere.



Get real-time visibility of your application delivery status and the state of your entire IT fleet on a unified dashboard.



chef.io/products/chef-infrastructure-management



chef.io/products/chef-app-delivery

Build Confidence with Continuous Compliance and Cloud Security

Maintain compliance, security and trustworthiness.

With Chef, you shouldn't have to sacrifice security for business agility. Our DevOps solution enables security and operations teams to work together to meet the needs of your business.

Chef helps streamline your IT infrastructure's compliance (on-premises or cloud) with certified, out-of-the-box configuration instructions and policy checks (content) that cater to standard benchmarks such as CIS, DISA-STIGs and internal regulations. These customizable content profiles can be used for faster compliance audits and automated remediation across diverse IT fleets.

You can also extend your compliance efforts to scan, monitor and remediate security risks and misconfigurations in your multi-cloud accounts across on-premises and cloud-native environments. You can scan systems across numerous environments (Dev, Pre-Prod, Prod), systems (Cloud, Kubernetes, VMs, Containers, Windows, Linux) and clouds (AWS, Azure, Google, Alibaba and many others). With Chef, you can achieve end-to-end cloud-native environment configuration and security validation, scan live running containers and validate Kubernetes settings.



Streamline audits to reduce time and costs by proactively tracking and fixing misconfigurations on-premises and in the cloud.



Foster a secure environment for all stakeholders with continuous compliance and extend it to the cloud too.



Protect your reputation by addressing breaches, identifying vulnerabilities, and managing increased risks and devices.



Gain in-depth visibility into the compliance state and cloud security of your IT fleet.



Maintain consistency with security policies and product launches across hybrid cloud platforms.

[→ chef.io/products/chef-compliance](https://chef.io/products/chef-compliance)

[→ chef.io/products/chef-cloud-security](https://chef.io/products/chef-cloud-security)



Empower DevOps professionals across teams using a common platform to orchestrate jobs for reactive and planned work.



Orchestrate quickly and efficiently for faster time to market with job orchestration.



Gain enhanced visibility and control over DevOps workflows.



Reduce the burden of internal skill sets, hiring and vendor tool costs.

Progress® Chef® 360™

JOB ORCHESTRATION AND NETWORK DEVICE MANAGEMENT

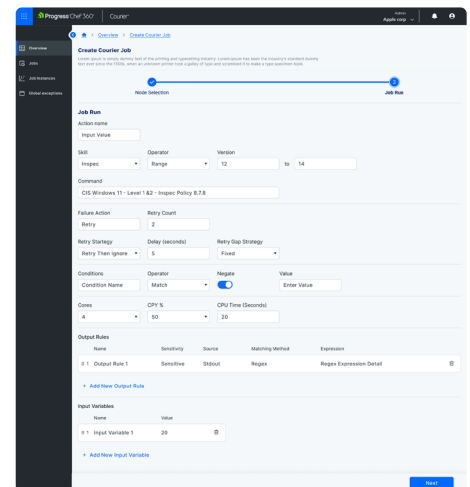
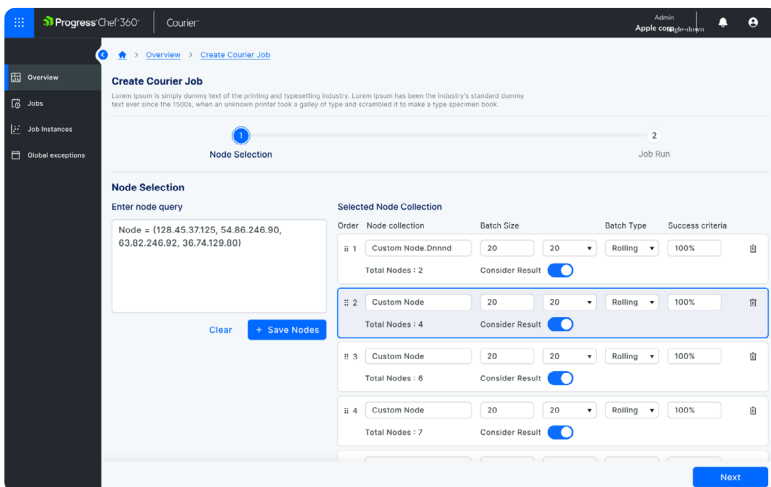
Achieve Unmatched Flexibility with Job Orchestration and Network Device Management

Orchestrate DevOps workflows. Choose to go agentless. Control your infrastructure your way.

Job Orchestration

Chef enables job orchestration with immense flexibility, allowing you to perform any workload with any payload (Whatever) on any target (Wherever) in your IT fleet at any time—immediate, scheduled or otherwise (Whenever). You can target specific nodes for tailored changes, enhancing scalability and maximizing ROI from your infrastructure investment. Use Chef to orchestrate ad hoc tasks for incident response, service requests or planned tasks for updates, rollouts, patching, compliance, security and application deployment on your IT fleets.

[→ chef.io/products/job-orchestration](https://chef.io/products/job-orchestration)



Network Device Management

Chef offers both agent-driven and agentless architectures. Choosing agentless network device management gives you the flexibility and control to manage any system or device without installing a native agent. This approach allows you to extend configuration management beyond VMs to networks, storage, Bluetooth devices and more, offering control that agent-driven architectures can't match—so you can update any device on your terms.



Become platform-agnostic (Cisco, Broadcom, Checkpoint and more) and manage network devices with any OS.



Gain faster configuration times since no installation is required on target devices.

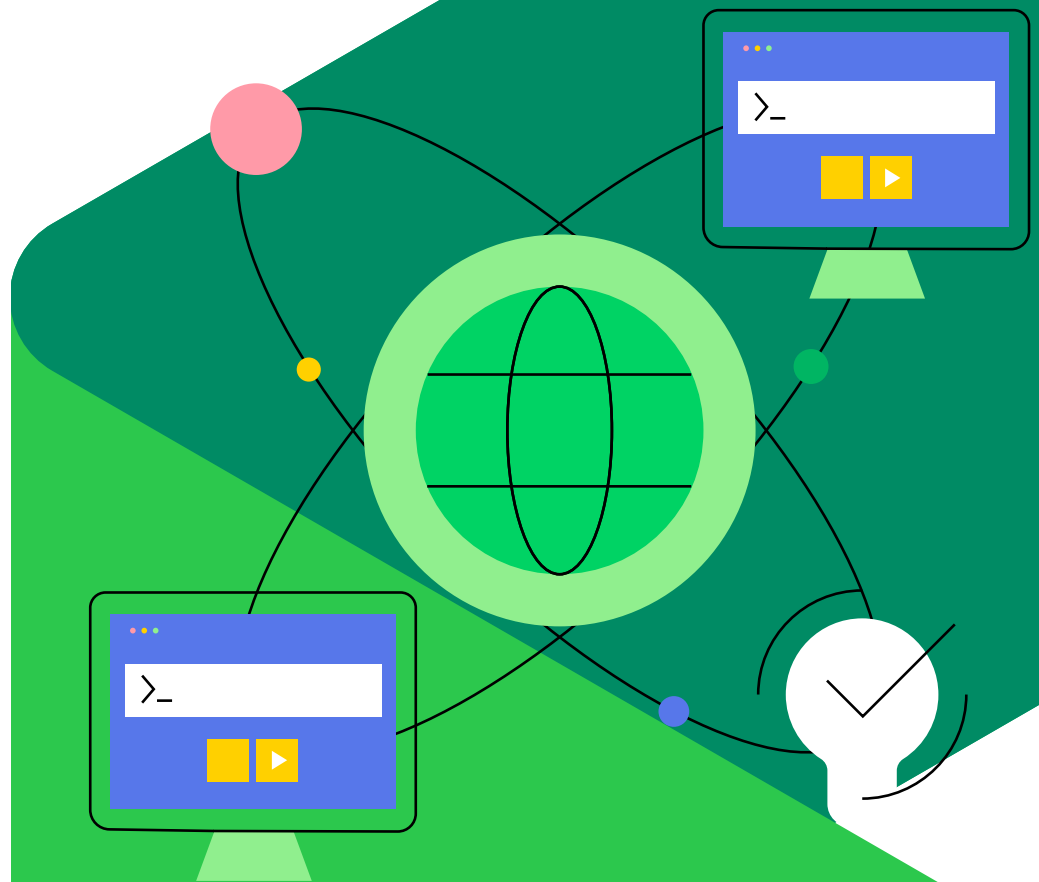


Improve performance compared to in-house solutions due to the agentless architecture.



Adapt quickly with existing Chef skills since you do not have to learn specific system architectures.

[→ chef.io/solutions/chef-agentless](https://chef.io/solutions/chef-agentless)





“For us, the reason that Chef was so attractive was its incredible flexibility.”

Phil Dibowitz,
Production Engineer, Meta



“Chef really offers a unique viewpoint on application dependencies that I think is really special and allows you to do a lot more than you thought you were even capable of. When we build these things, we know they’re going to work. That’s a beautiful thing.”

Rob Ericsson,
Sr. VP Product Development, Rizing



“Using Chef saves a lot of time, and it saves a lot of money, because you write a profile one time, and then you can run it against all of your nodes in seconds. You don’t have to go manually check those things. If you run the profile right now through a scan job, you have your answer. Either it is or it isn’t compliant.”

Brittany Woods,
Automation Engineer, CARFAX



“Thanks to Chef, the setup on our development has become so easily scriptable that we can hit the ground running and write meaningful code very quickly—it’s tested and it’s ready to rock’n’roll.”

Tim Odom,
Senior Site Reliability Manager at iManage





www.progress.com

About Progress

Progress (Nasdaq: PRGS) empowers organizations to achieve transformational success in the face of disruptive change. Our software enables our customers to develop, deploy and manage responsible AI-powered applications and experiences with agility and ease. Customers get a trusted provider in Progress, with the products, expertise and vision they need to succeed. Over 4 million developers and technologists at hundreds of thousands of enterprises depend on Progress. Learn more at www.progress.com

© 2024 Progress Software Corporation and/or its subsidiaries or affiliates.
All rights reserved. Rev 2024/10 | RITM0261255

Worldwide Headquarters

Progress Software Corporation
15 Wayside Rd, Suite 400, Burlington, MA 01803, USA
Tel: +1-800-477-6473

-  facebook.com/getchefdotcom
-  twitter.com/chef
-  youtube.com/getchef
-  linkedin.com/company/chef-software
-  learn.chef.io
-  github.com/chef
-  twitch.tv/chefsoftware